

User Manual

Y42 BT Label Printer

Thankyou for choosing our printer.
please read this manualcarefully and keep it for future reference.

Content

1.Quick Setup Guide	01
2.Packaging List	02
3.Printer Connection	03
4.Label Loading and Calibration	05
5.Windows Setup Via USB	06
5.1. Driver installation	07
5.2.Printer preference setting	08
6.Mac Setup Via USB	10
6.1.Driver installation	10
6.2.Printer preference setting	12
7.Chromebook Setup Via USB	14
8.Smartphone APP Setup	16
9.User Tips	18
10.LED Status	19
11.Feeder Button Instructions	20
12.Safety notices	21
13.Maintenance.....	21
14.Specifications	22
15.Disposal	23
16.Pay Attention To	23
17.FCC Statement	24

QUICK SETUP GUIDE

Congratulations on your purchase of our Printer. We are your loyal business partner offering commercial solutions to batch labels printing.

Please take a moment to read this user guide as incorrect operation may result in unsatisfactory print quality, reduced user experience, or even damage to your printer or injury.

Y42BT is a thermal label printer which uses thermal label media without ink, toner and ribbon. It can print various labels for logistics, pricing, barcodes, QR codes, shipping label, badges, etc.

Original instructions for Thermal Label Printer, please read all manual instructions carefully before operating. We reserve clear interpretation of our user manual. The appearance of the product shall be subject to the product you received. Please forgive us that we won't inform you again if there is any technology or software updates on our product.

PACKAGING LIST

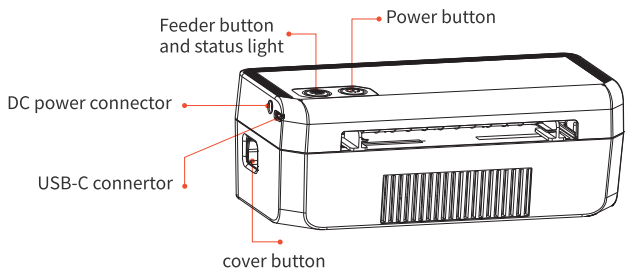
I 1.1 What' s in the package?



- | | | |
|---------------------------|--------------------|------------------------|
| A Printer | B USB Cable | C Power Adapter |
| D Kabel zasilajacy | E Labels | F User Manual |

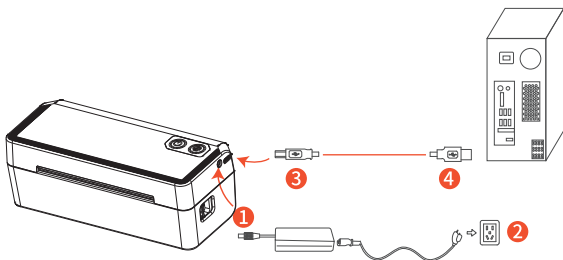
- If contents are missing or damaged, please contact us.

I 2.1 Printer Overview



PRINTER CONNECTION

I 3.1 Quick printer connection



Please follow the sequence of the above picture to operate

LABEL LOADING AND CALIBRATION

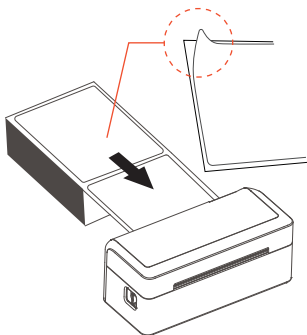
Y42BT is capable of working with labels in various sizes, and it needs to learn your label properties before its first use.

To initiate automatic label loading and run intelligent label calibration, please follow these steps:

4.1 Power On

Press and hold the power button for about 3 seconds.

4.2 Automatic Label identification:



- Load no less than 4 consecutive labels from the back slot of printer.
- After the paper is stable, press and hold feeder button, until you hear a beep.
- Then, the printer will automatically label identification.

It's suggested to adjust the label guide to match the width of the label if necessary before the label is pushed in.

WINDOWS SETUP VIA USB

5.1 Windows Setup Via USB

1. Before installation, ensure the printer is turned on, and USB cable is connected to your computer.

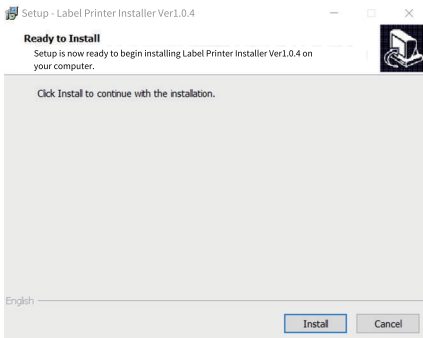
2. Go to "This PC", open the U-Disk named "Driver", double click "Download driver" webpage to download the driver and watch the installation tutorial videos, You can also visit <https://printhead.com/driver-download/> and click "Download" menu to download the driver and get the FAQs.

3. Follow these steps to finish driver installation on Windows:

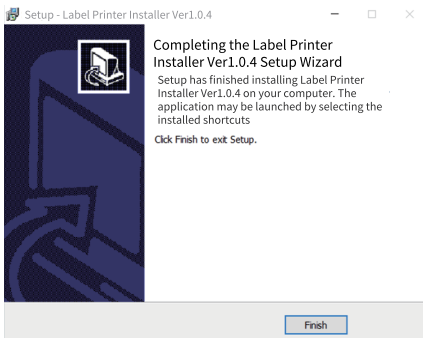
1). Open the "LabelPrinter-Windows-Driver-Latest.exe" file with a double-click to start the installation process.

If the file is named "LabelPrinter-Windows-Driver-Latest.zip" you need to decompress it to the .exe file.

2). Click "Install" follow the onscreen instructions.



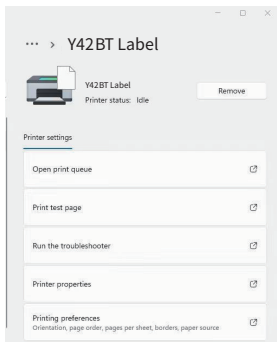
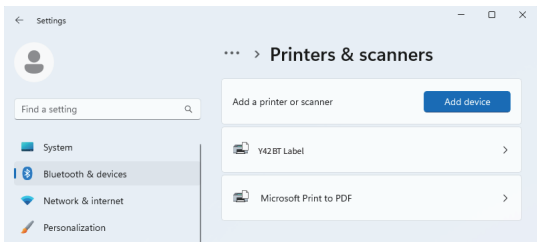
3).Click"Next" and "Finish" to complete the driver installation.



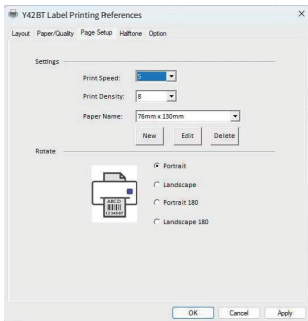
5.2 Printer preference setting

Take Windows 11 as an example:

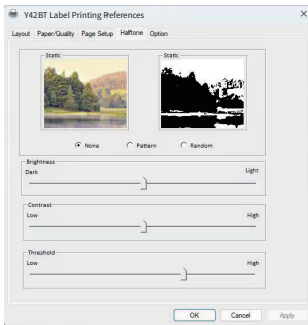
1. Go to "Settings" -> "Bluetooth & Devices" -> "Printers & Scanners" find and click the printer "Y42BT Label" -> "Printing preferences"
remark: the printer can not connect with bluetooth of computer.



2. Click "Page Setup" sheet, you can change the paper size, print speed, print density and rotate.



3. Click "Halftone" sheet, you can change the image dithering algorithm to make your image or "COD" letters print clearly.



MAC SETUP VIA USB

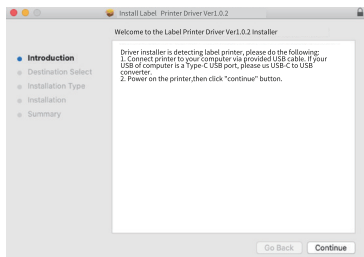
6.1 macOS Setup Via USB

1. Before installation, ensure the printer is turned on, and USB cable is connected to your computer.

2. Visit <https://help.flashlabel.com> and search keyword by printer model to download driver and watch installation video.

3. Follow these steps to finish driver installation on macOS:

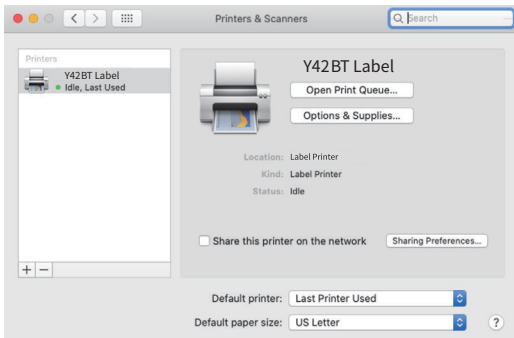
- 1). Double-click the file "LabelPrinter-Mac-Driver-Latest.pkg".
- 2). Click "Continue" and follow the onscreen instructions to finish.



4).Open "System Preferences",and click "Printers & Scanners".

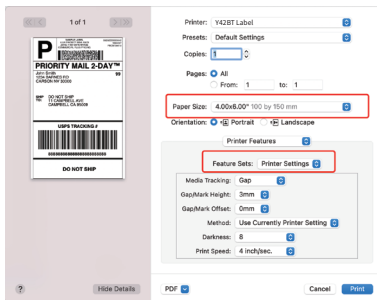


5).Power on the printer, you can see "Y42 Label" or "Y42BT Label" in the list, now you can print labels.

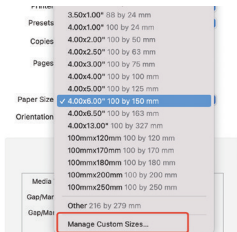


6.2 Printer preference setting.

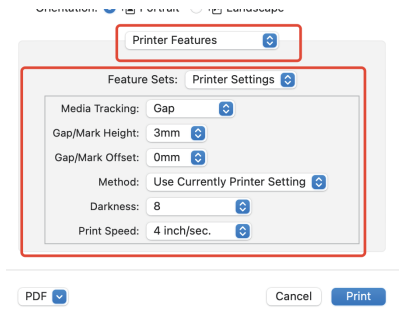
1. Open a PDF file with Preview-> Click "File"->"Print"->Select the printer "Y42BT Label".



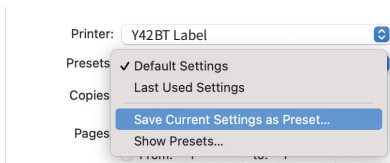
2.Click "Paper Size"->Choose the corresponding paper size according to the loaded label size.If the size you need is not listed, click "Manage Custom Sizes", input the width and height, then click "OK" (Please press button to calibrate before printing if you change loaded labels to another size.)



3. Click "Preview" -> "Printer Features", then you can change the settings of printer, e.g Speed, Darkness, Rotate.



4. After changing settings, you need to click "Save Current Settings as Preset..." to save.



5. Click "Print" to start printing.

CHROMEBOOK SETUP VIA USB

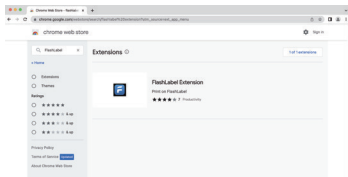
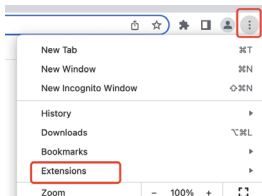
7. ChromeBook Setup Via USB

1. Before installation, ensure the printer is turned on, and USB cable is connected to your computer.

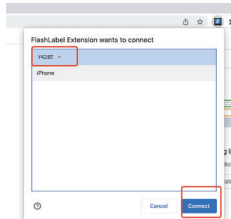
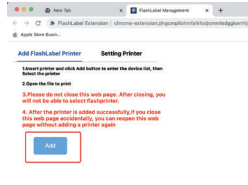
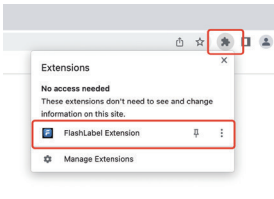
2. Visit <https://help.flashlabel.com> and search keyword by printer model to download driver and watch installation video.

3. Follow these steps to finish driver installation on Chrome OS:

1). Search and add "Flashlabel" extension in the Chrome Web Store.



2).Click the extension icon-> Choose "FlashLabel" ->Click "Add" -> Choose "Y42BT"-> Click "Connect".



2).Open a PDF file with Chrome Browser -> Choose "FlashLabel" and your paper size-> Click "Print".



SMARTPHONE APP SETUP

Before using the printer, please install the “FlashLabel Pro” app from App Store or Google Play. You can also scan QR code below to install “FlashLabel Pro” app.



*On Home of “FlashLabel Pro” app, you'll get thousands of templates after taping Template.

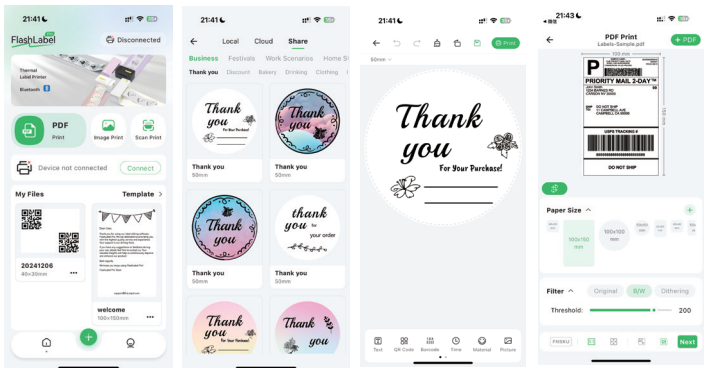
Open App and turn on Bluetooth on your phone, and make sure the printer is turned on. On Home, tap connect button, then select the printer and click "Connect" button.

Note: 1, If a PIN code is required, input 0000 or 1234.

2, Due to Android system's requirement, you need to enable location to turn on the Bluetooth.

After connecting, tap "+" to create a new label, or tap "Template" on the Home tab to enter the label editor. You can also import PDF files into App to print.

Please scan the QR code on the last page (page 25) to watch how to use "FlashLabel Pro" App to connect and print, or you can watch tutorial videos in App.



USER TIPS

1. When you load the labels, the peeling-off side should face up. Or it would cause printing blank.



2. Make sure there are no particles on the surface of labels to avoid damages to the TPH (Thermal Printer Head).

3. For Windows users, please keep using the same USB Port on your computer to avoid producing unexpected duplicated copies of the printer on your computer.

4. The label size of the Y42BT printer is default to 100mm x 150mm. Each time you change different label sizes, please run the Intelligent Label Calibration process before printing.

5. In case labels keep coming out unexpectedly, just press the feeder button to pause the printer, and clear the printing job from your computer.

6. If there are white spots on printed labels, it indicates that the printer head needs cleaning. Stop printing, and clean the TPH (Thermal Printer Head) after cooling to avoid burns.

7. When the label is jammed accidentally, please open the cover and take out the jammed labels slowly and patiently. The printer will resume after cleaning.

LED STATUS

Light	Description	Troubleshoot
Green	Normal operation	
Blue	Bluetooth connected	
Flashing Red (every 1 second)	Label paper is not identified	Run automatic label identification
Flashing Red (every half second)	Cover is not closed	Check that the cover is completely closed
Flashing Blue and Red	Printer head is overheated	Printer will automatically resume once the printer head has cooled down

Feeder Button Instruction

Printer status	Feeder button	Function
Printing	Press the button	Pause printing
Standby	Press and hold on until you hear one beep	Automatic label identification
Standby	Press and hold on until you hear five beeps	Reset Printer

Power button instruction

Printer status	Power button	Function
Power off status	Press and hold the button for 3 seconds	Printer power on
Power on status	Press and hold the button for 3 seconds	Printer power off

FEEDER BUTTON INSTRUCTIONS

1. Press once: Feed a blank page/Pause/Resume

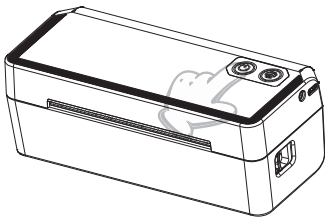
(1) When the printer is in ready status and there are no holding jobs, press the feeder button once, the printer will feed a blank page.

(2) When the printer is running, press once will pause the job, press once again will resume the job. (Although it is not recommended, if you want to urgently stop an unwanted printing task, you may turn off the power directly and don't forget to cancel the print task from the computer at the same time).

2. Press and hold the feeder button for about 3 seconds until you hear one beep, printer will run the Intelligent Label calibration process. This process is recommended each time you change the label sizes.

3. Press and hold the feeder button for about 5 seconds until you hear two beeps. Printer will print a test page. If the test page looks good, it indicates that the printer head is working properly.

4. Press and hold the feeder button for about 15 seconds until you hear five beeps. This will reset the printer to the factory setting. This process is harmless to the printer and can be used if you want the printer to recover from an unknown error.



SAFETY NOTICES

1. DO NOT touch the printer head after use.
2. DO NOT disassemble or repair the unit by yourself.
3. USE ONLY approved accessories.
4. Keep the printer away from water, fire, or other objects that could destroy the components.
5. Keep the printer away from children.
6. DO NOT use the printer if you find any irregularities which could result in electrocution or fire.
7. Please unplug the power when not in use for a long time.

MAINTENANCE

Printer Head Cleaning Steps:

- (1) Please make sure that the printer is powered off and cooling down before cleaning;
- (2) Push the Push Button on the left side to open the printer lid;
- (3) Use the Printer Head Cleaning Wipes to gently apply onto the Thermal Printer Head (no water or other liquid should be applied).

SPECIFICATIONS

Method	Direct Thermal
Resolution	203 dpi
Max Printing Speed	100 mm/s
PaperWidth	35-110 mm (1.38-4.3inches)
Paper Thickness	0.06-0.25 mm
Power Adapter	24V \Rightarrow 2.5A
Printing Lfe	TPH 50Km
Operating Environment	Temperature: 0 to 50°C Humidity: 10-90%(noncondensing)
Storage Environment	Temperature: -10 to 70°C Humidity: 5-95%(noncondensing)
Connection	USB , Bluetooth(optional)
Weight	0.86 lbs/0.39kg
Dimensions	183x80x65mm(L*W*H)

DISPOSAL

This product is subject to the provisions of European Directive 2012/19/EU. The symbol showing a wheellie bin crossed through indicates that the product requires separate refuse collection in the European Union. This applies to the product and all accessories marked with this symbol. Products marked as such may not be discarded with normal domestic waste, but must be taken to a collection point for recycling electrical and electronic devices.



PAY ATTENTION TO

Pay attention to : This device complies with Part 15 of the FCC Rules. Operation is subject to the following two conditions: (1) This device may not cause harmful interference, and (2) this device must accept any interference received, including interference that may cause undesired operation.

FCC Statement

FCC Caution :

This device complies with part 15 of the FCC Rules. Operation is subject to the following two conditions: (1) This device may not cause harmful interference, and (2) this device must accept any interference received, including interference that may cause undesired operation.

Any Changes or modifications not expressly approved by the party responsible for compliance could void the user's authority to operate the equipment.

Note: This equipment has been tested and found to comply with the limits for a Class B digital device, pursuant to part 15 of the FCC Rules. These limits are designed to provide reasonable protection against harmful interference in a residential installation.

This equipment generates uses and can radiate radio frequency energy and, if not installed and used in accordance with the instructions, may cause harmful interference to radio communications. However, there is no guarantee that interference will not occur in a particular installation.

If this equipment does cause harmful interference to radio or television reception, which can be determined by turning the equipment off and on, the user is encouraged to try to correct the interference by one or more of the following measures:

- Reorient or relocate the receiving antenna.
- Increase the separation between the equipment and receiver.
- Connect the equipment into an outlet on a circuit different from that to which the receiver is connected.
- Consult the dealer or an experienced radio/TV technician for help.

The device has been evaluated to meet general RF exposure requirement. The device can be used in portable exposure condition without restriction.